

Video Audition deadline: June 1, 2020

To register and submit materials, go to the BYOV website: bayyouth.org and click on the Accepted link

BYOV auditions are very competitive. Make sure you understand and practice all requirements of the audition. Private instruction is highly recommended. Please consult your private instructor, orchestra director or band director if you have any questions regarding what solo repertoire is appropriate.

Students are required to prepare all of the following material for this audition:

- 1) **Scales:** Please note the following scale requirements: a) Play the following scales: **Chromatic scale throughout range of instrument and A Major.** b) Scales are called by **KEY NAME**, not **CONCERT PITCH**. c) Scales are to be played in as many complete octaves as possible on the instrument. d) Articulation is legato tongue up and down. e) Tempo is MM = 100 for wind players. f) The following rhythm pattern will be used for all octaves: quarter note (tonic) followed by eighth notes.
- 2) **Prepared solo piece:** Students should prepare a 2-3 minute excerpt of a standard concerto or sonata for their instrument. Memorization is not required.
- 3) **Orchestral Excerpts:** Students should prepare all of the orchestral excerpts below. It is highly recommended that you listen to professional recordings of the pieces below.

First two excerpts from Bizet Carmen Suite No 1. Third excerpt: Brahms Symphony No 2 Movement 4

N°1^a Aragonaise.

Allegro vivace. (♩ = 80.)

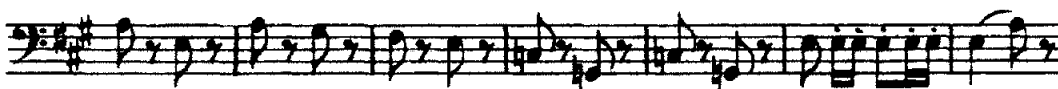
(Prelude to Act IV)



N° 5. Les Toréadors.

Allegro giocoso. (♩ = 116.)

(Introduction to Act I)



Brahms Symphony No 2 movement IV (half note= 100) *notice the tenor clef!

Musical staff with a tenor clef. A circled '0' is positioned above the staff. The dynamic marking *fp* is written below the staff.

Musical staff with measure number 355. The dynamic marking *p* is written below the staff.

Musical staff with measure number 363. The dynamic marking *f* is written below the staff. First endings are indicated by the number '1' above the staff.

Musical staff with measure number 372. The dynamic marking *f* is written below the staff. Instrument labels 'Vcl. K.-B. Fag.' and 'Hr. Trpt.' are present. A circled 'P' is above the staff.

Musical staff with measure number 389. The dynamic marking *cresc.* is written below the staff.

Musical staff with measure number 397. The dynamic marking *f* is written below the staff. A first ending is indicated by the number '11' above the staff.

Musical staff with measure number 417. The dynamic marking *ff* is written below the staff. The instrument label 'Trpt.' is written above the staff. A first ending is indicated by the number '3' above the staff.